



# POLR3H Polyclonal Antibody

<b>Catalog No</b>	YP-Ab-01954
<b>Isotype</b>	IgG
<b>Reactivity</b>	Human;Mouse;Rat
<b>Applications</b>	WB;IHC;IF;ELISA
<b>Gene Name</b>	POLR3H
<b>Protein Name</b>	DNA-directed RNA polymerase III subunit RPC8
<b>Immunogen</b>	The antiserum was produced against synthesized peptide derived from human RPC8. AA range:151-200
<b>Specificity</b>	POLR3H Polyclonal Antibody detects endogenous levels of POLR3H protein.
<b>Formulation</b>	Liquid in PBS containing 50% glycerol, 0.5% BSA and 0.02% sodium azide.
<b>Source</b>	Polyclonal, Rabbit,IgG
<b>Purification</b>	The antibody was affinity-purified from rabbit antiserum by affinity-chromatography using epitope-specific immunogen.
<b>Dilution</b>	WB: 1/500 - 1/2000. IHC: 1/100 - 1/300. ELISA: 1/40000.. IF 1:50-200
<b>Concentration</b>	1 mg/ml
<b>Purity</b>	≥90%
<b>Storage Stability</b>	-20°C/1 year
<b>Synonyms</b>	POLR3H; KIAA1665; RPC8; DNA-directed RNA polymerase III subunit RPC8; RNA polymerase III subunit C8; DNA-directed RNA polymerase III subunit H; RNA polymerase III subunit 22.9 kDa subunit; RPC22.9
<b>Observed Band</b>	23kD
<b>Cell Pathway</b>	Nucleus.
<b>Tissue Specificity</b>	Adrenal gland,Brain,Pituitary,
<b>Function</b>	function:DNA-dependent RNA polymerase catalyzes the transcription of DNA into RNA using the four ribonucleoside triphosphates as substrates. Specific peripheric component of RNA polymerase III which synthesizes small RNAs, such as 5S rRNA and tRNAs.,similarity:Belongs to the eukaryotic RPB7/RPC8 RNA polymerase subunit family.,subunit:Component of the RNA polymerase III (Pol III) complex consisting of 17 subunits (By similarity). Interacts with CRCP/RPC9. POLR3H/RPC8 and CRCP/RPC9 probably form a Pol III subcomplex.,
<b>Background</b>	function:DNA-dependent RNA polymerase catalyzes the transcription of DNA into RNA using the four ribonucleoside triphosphates as substrates. Specific peripheric component of RNA polymerase III which synthesizes small RNAs, such as 5S rRNA and tRNAs.,similarity:Belongs to the eukaryotic RPB7/RPC8 RNA polymerase subunit family.,subunit:Component of the RNA polymerase III (Pol III)



complex consisting of 17 subunits (By similarity). Interacts with CRCP/RPC9. POLR3H/RPC8 and CRCP/RPC9 probably form a Pol III subcomplex.,

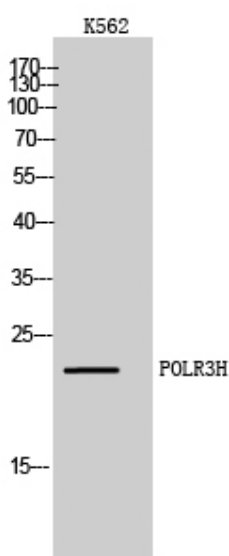
**matters needing attention**

Avoid repeated freezing and thawing!

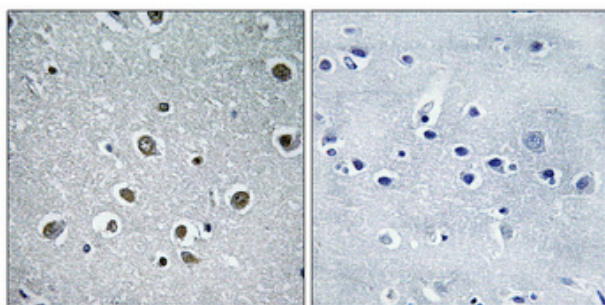
**Usage suggestions**

This product can be used in immunological reaction related experiments. For more information, please consult technical personnel.

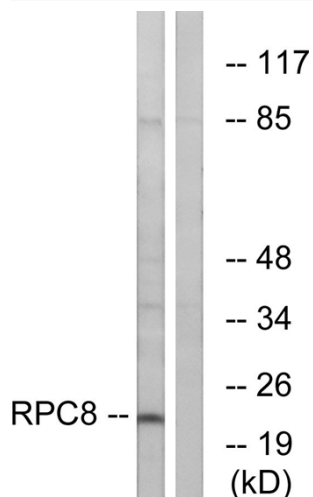
**Products Images**



Western Blot analysis of K562 cells using POLR3H Polyclonal Antibody diluted at 1:1000 cells nucleus extracted by Minute TM Cytoplasmic and Nuclear Fractionation kit (SC-003, Invent biotech, MN, USA).



Immunohistochemical analysis of paraffin-embedded Human brain. Antibody was diluted at 1:100 (4° overnight). High-pressure and temperature Tris-EDTA, pH 8.0 was used for antigen retrieval. Negative control (right) obtained from antibody was pre-absorbed by immunogen peptide.



Western blot analysis of lysates from K562 cells, using RPC8 Antibody. The lane on the right is blocked with the synthesized peptide.